

三菱工業用ミシン部品カタログ

MITSUBISHI Industrial Sewing Machine Parts Catalog

Model
LS2-190

目次

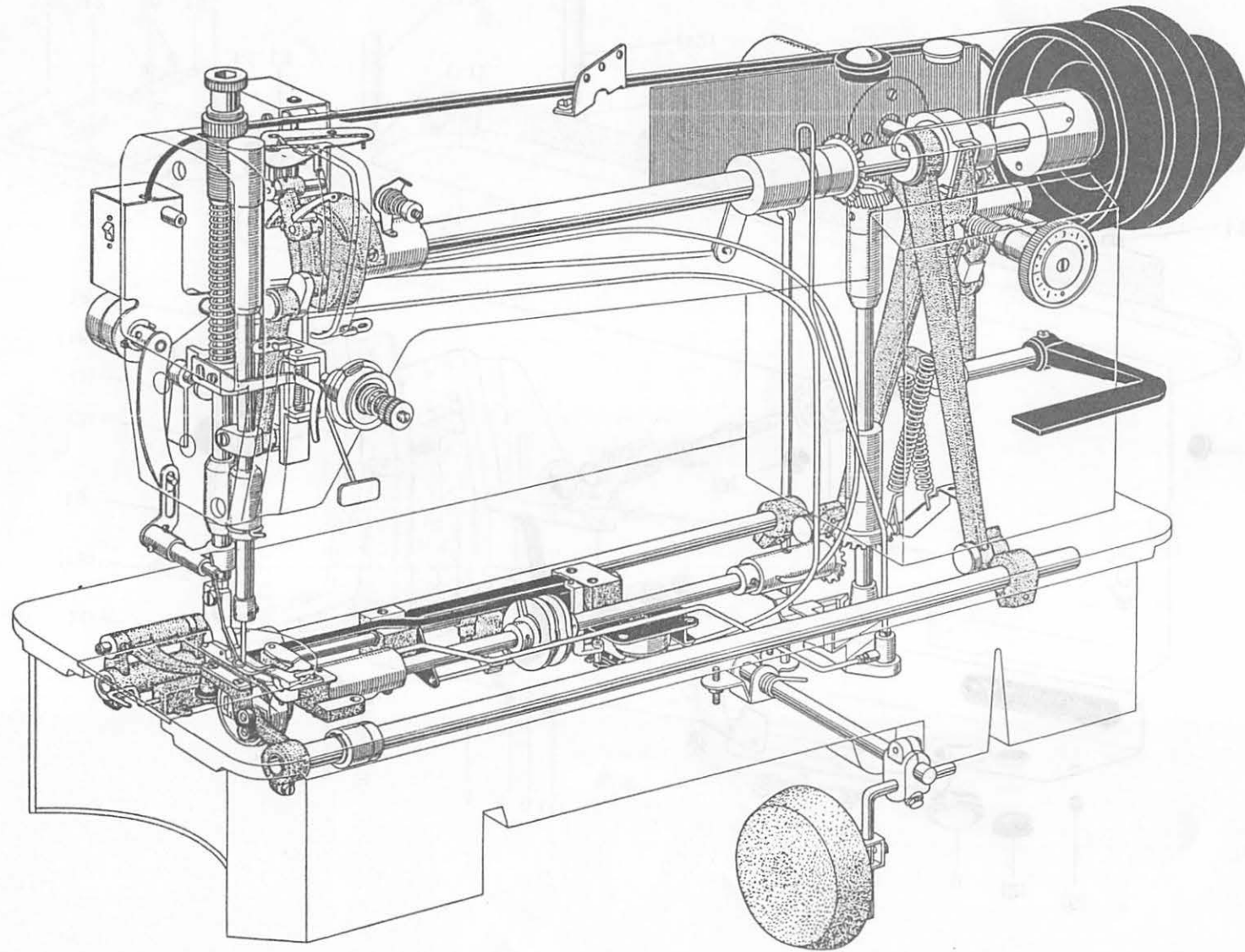
1. 機	構	図
2. 本	体	関
3. 本	体	関
4. 天	秤	針
5. 上	軸	・
6. 送	り	調
7. 押	エ	関
8. 水	平	送
9. 下	軸	・
10. メ	ス	(
11. カ	ム	軸
12. ピ	ッ	カ
13. 検	出	器
14. ワ	イ	バ
15. タ	ッ	チ
16. 給	油	関
17. 付	属	品
18. 付	属	品

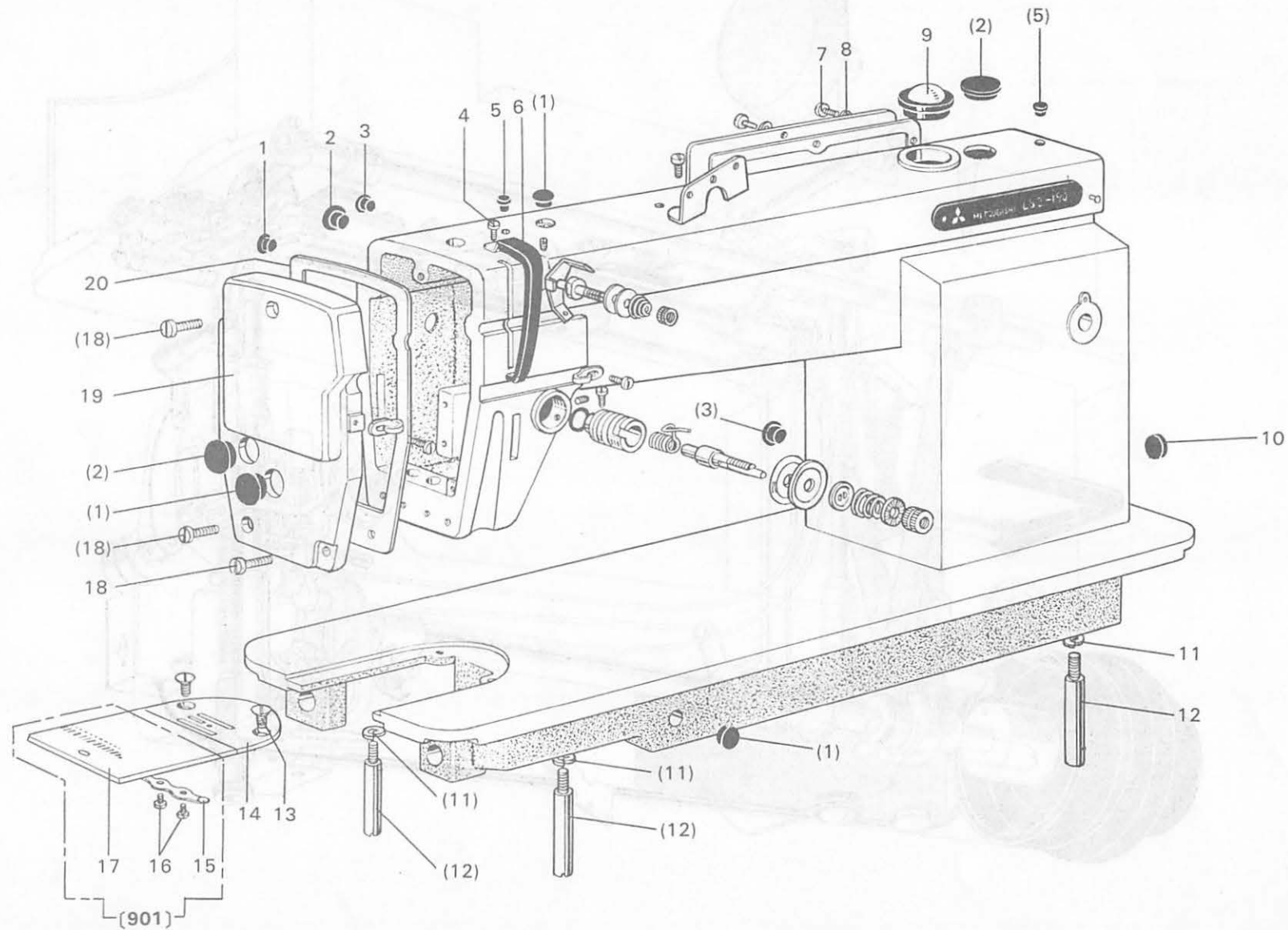
INDEX

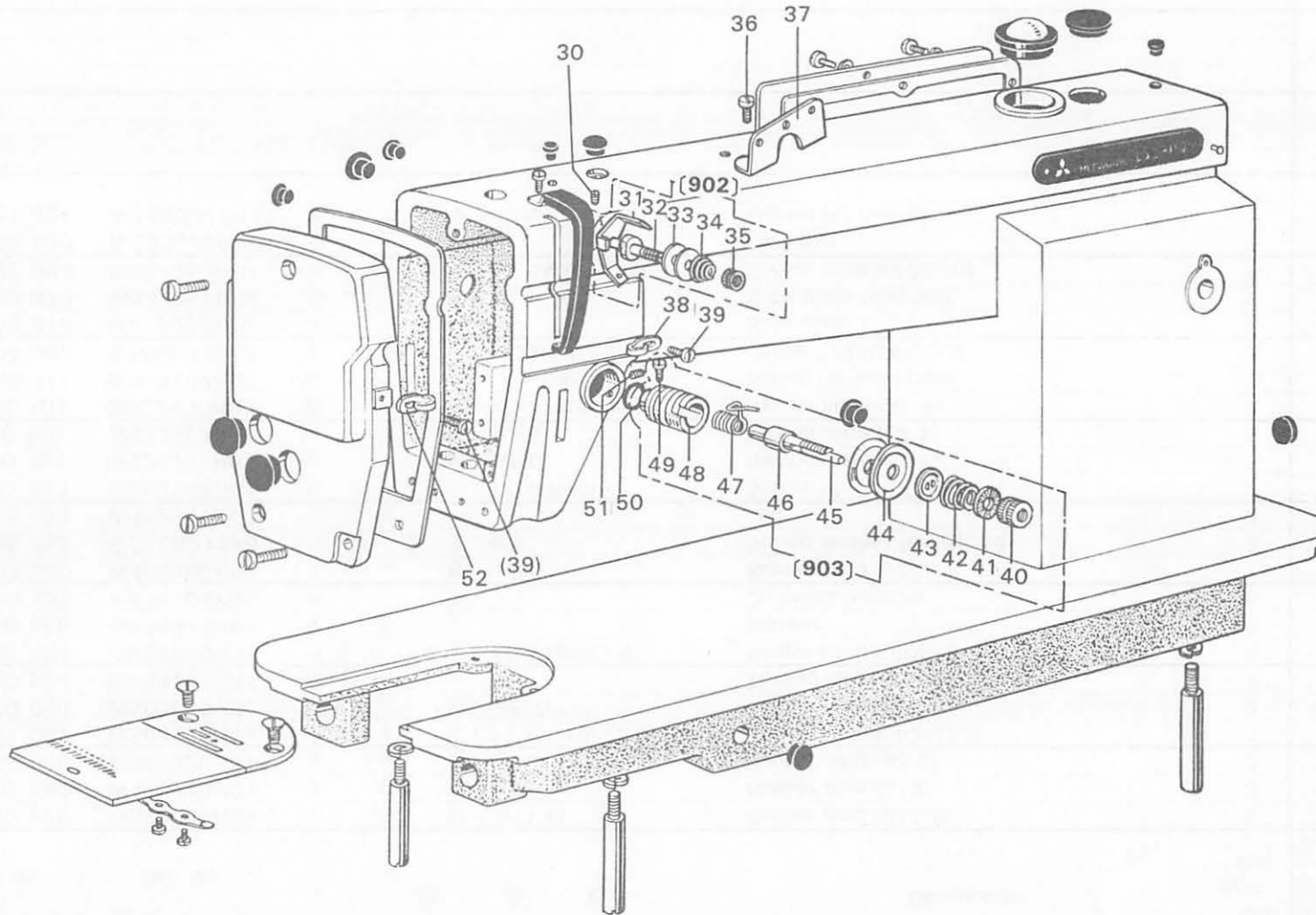
Total assembly	
Arm bed & its accessories	2
Arm bed & its accessories	4
Thread take-up lever & needle bar mechanism	6
Arm shaft & vertical shaft mechanism	8
Stitch length regulator mechanism	10
Presser bar lifting mechanism	12
Feed rock shaft & feed lifting rock shaft mechanism	14
Hook shaft & hook mechanism	16
Knife actuating mechanism	18
Com shaft bracket	20
Picker & underbed trimmer actuator	22
Synchronizer mechanism	24
Wiper mechanism	26
Touch back sewing mechanism	28
Oil lubrication mechanism	30
Accessory box	32
Accessories	34

 三菱電機株式会社

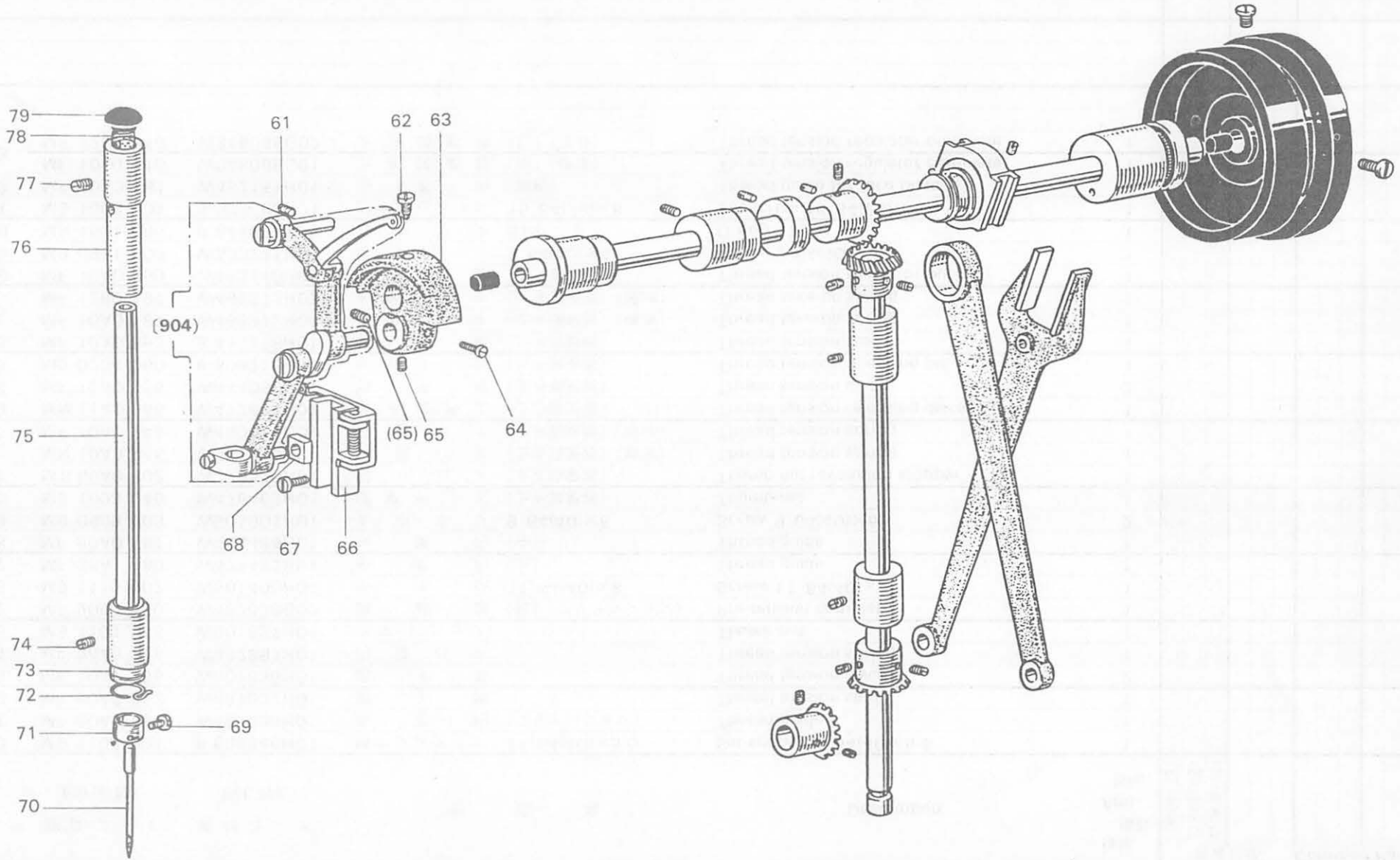
P-108A 198309



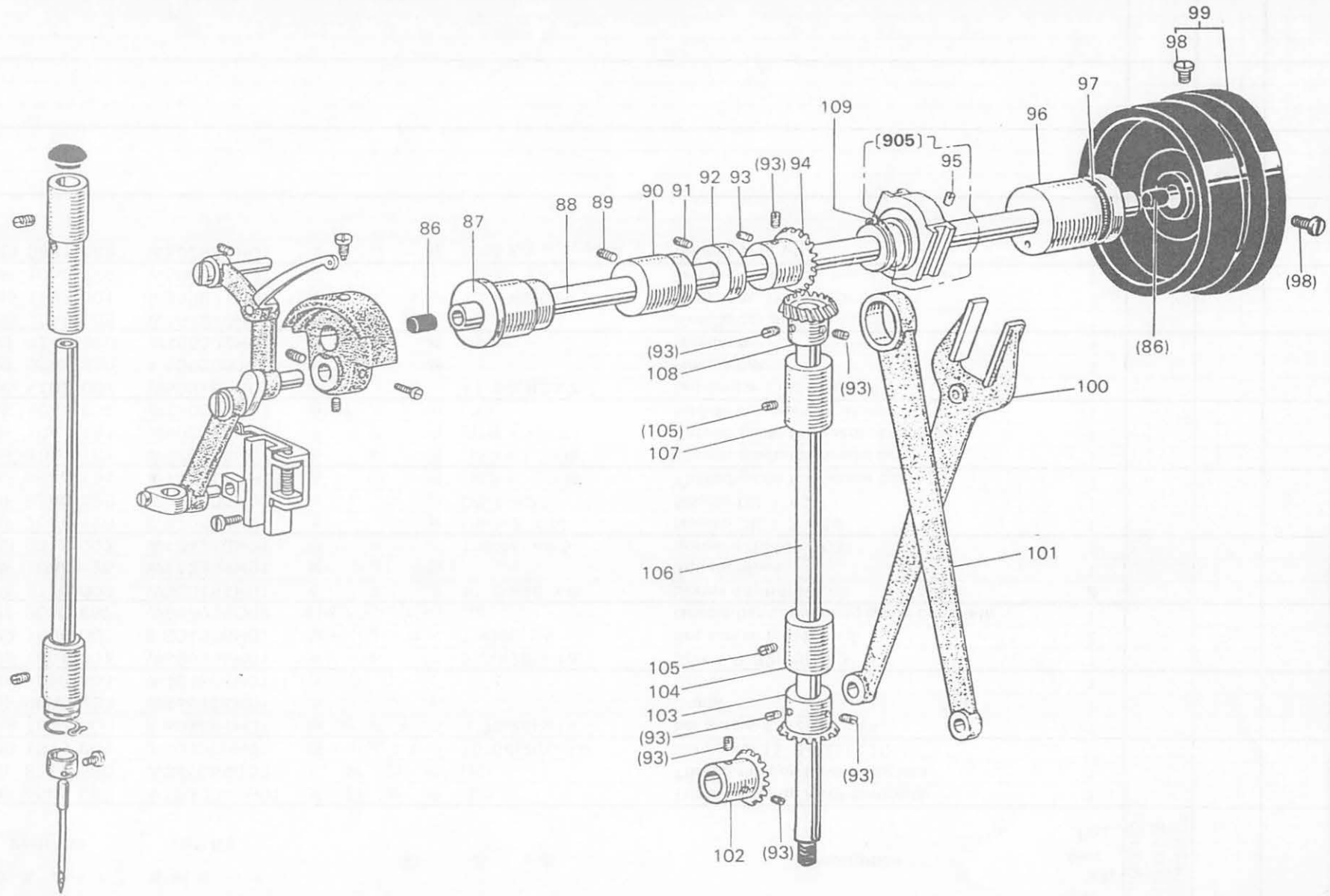


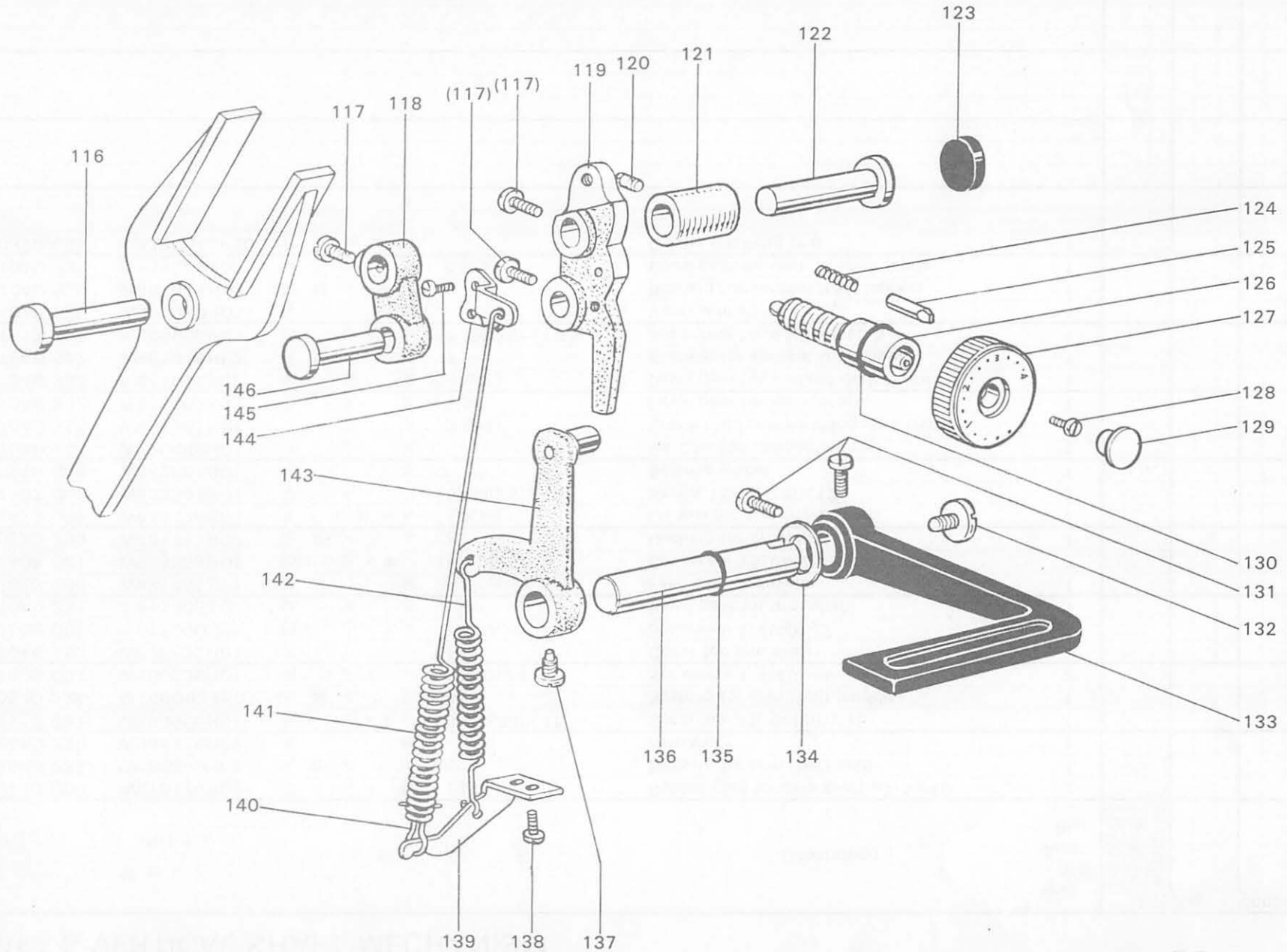


THREAD TAKE-UP LEVER & NEEDLE BAR MECHANISM

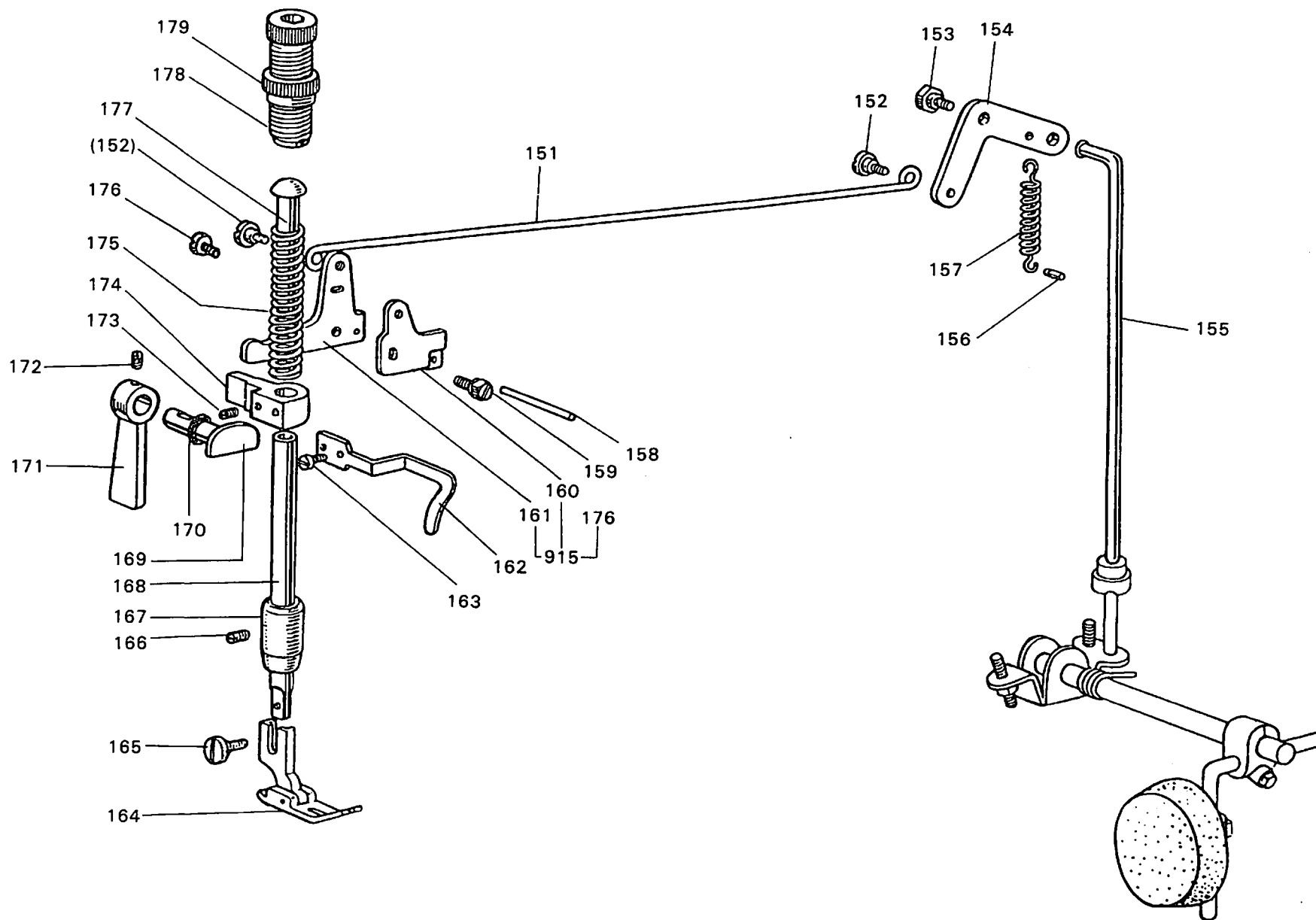


ARM SHAFT & VERTICAL SHAFT MECHANISM

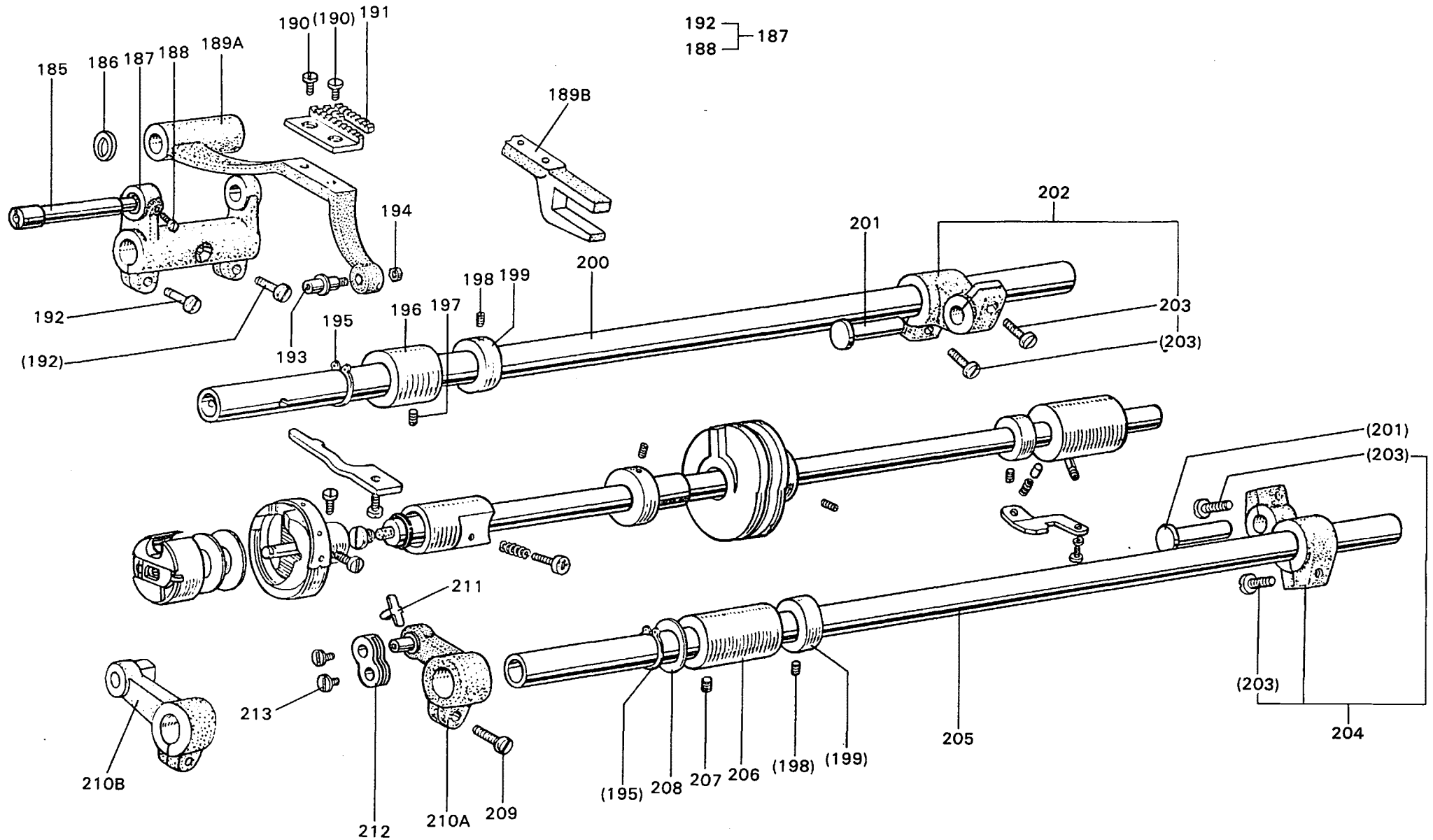




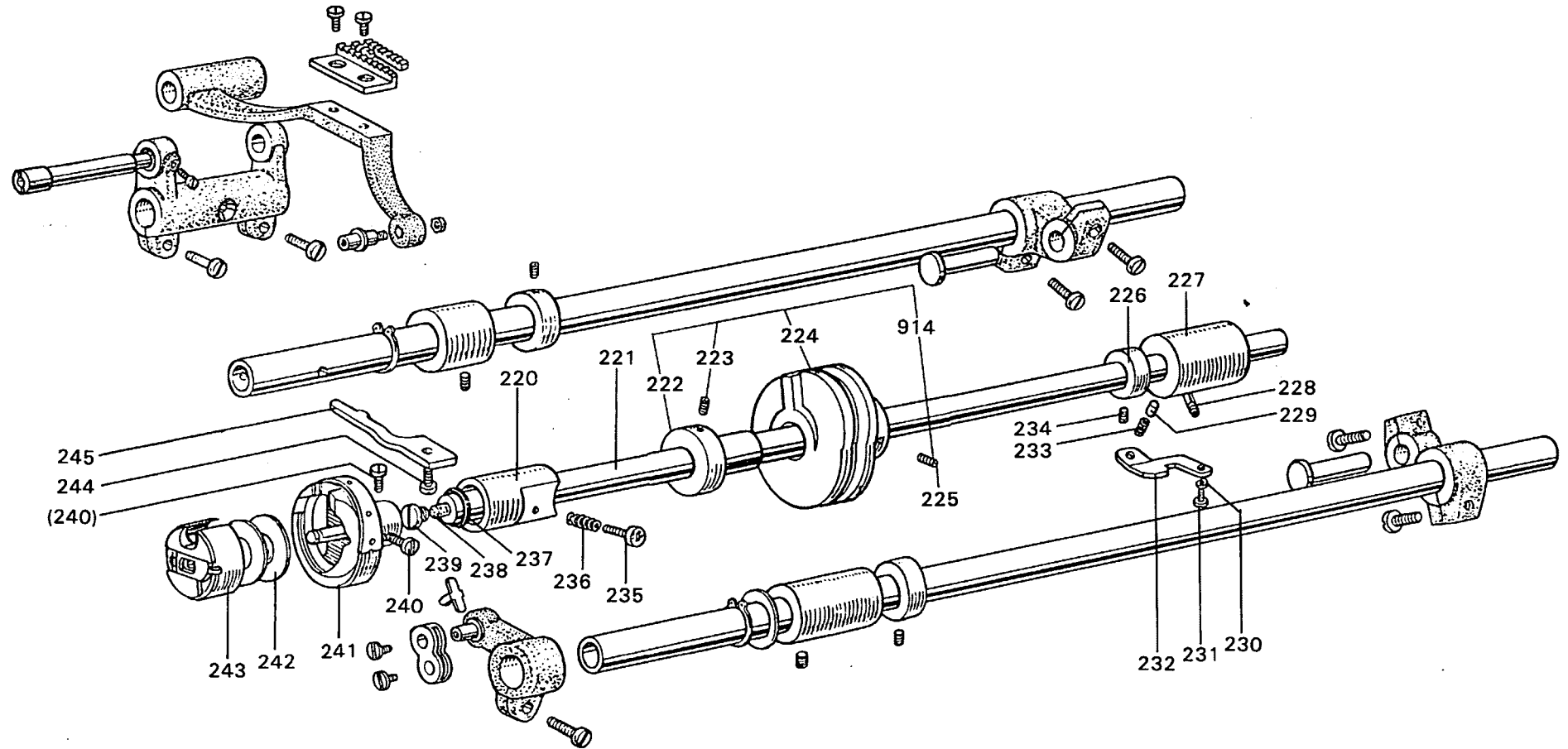
PRESSER FOOT MECHANISM



FEED ROCK SHAFT & FEED LIFTING SKAFT MECHANISM

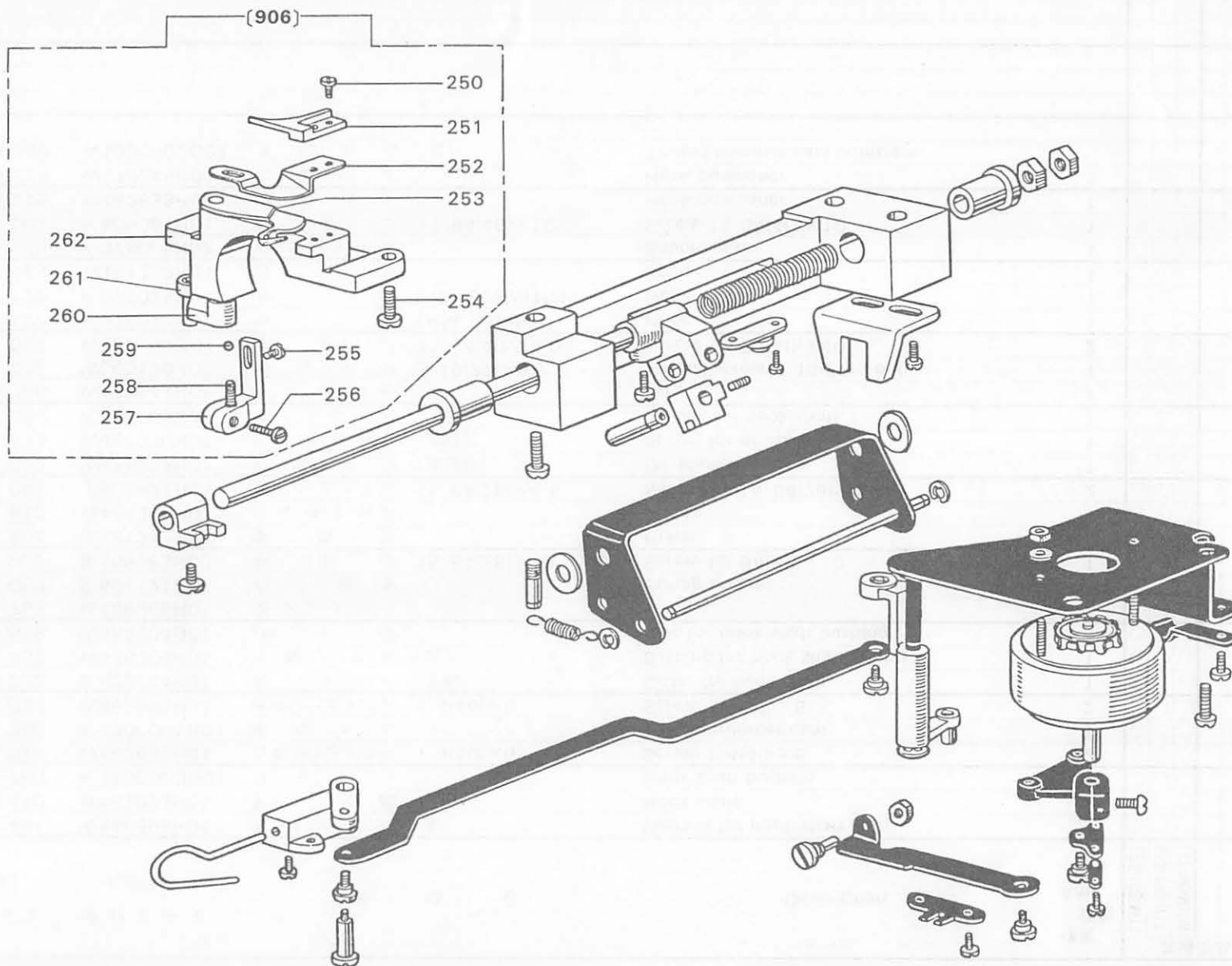


HOOK SHAFT & HOOK MECHANISM



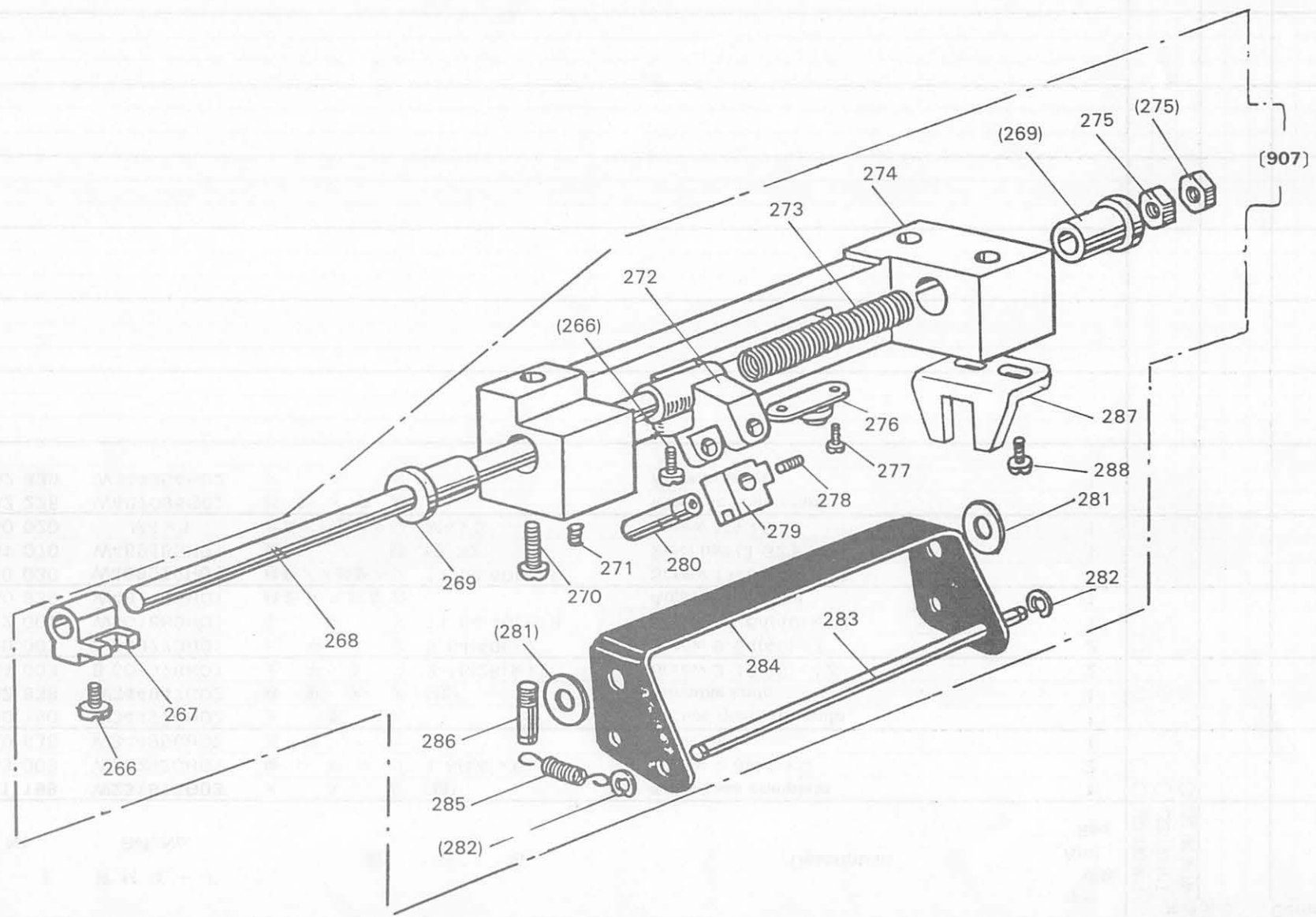
KNIF (ACTUATING) MECHANISM

125180

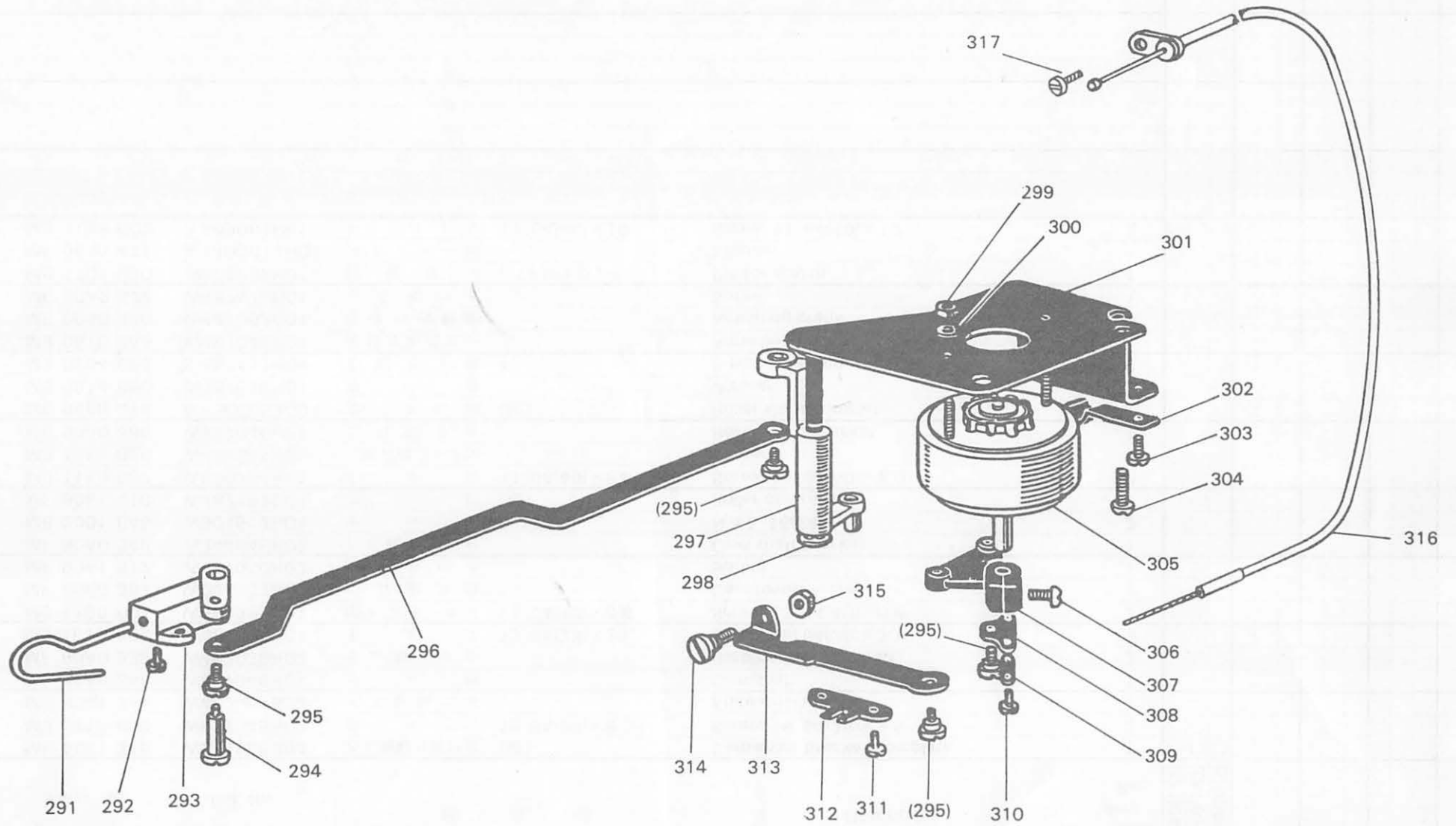


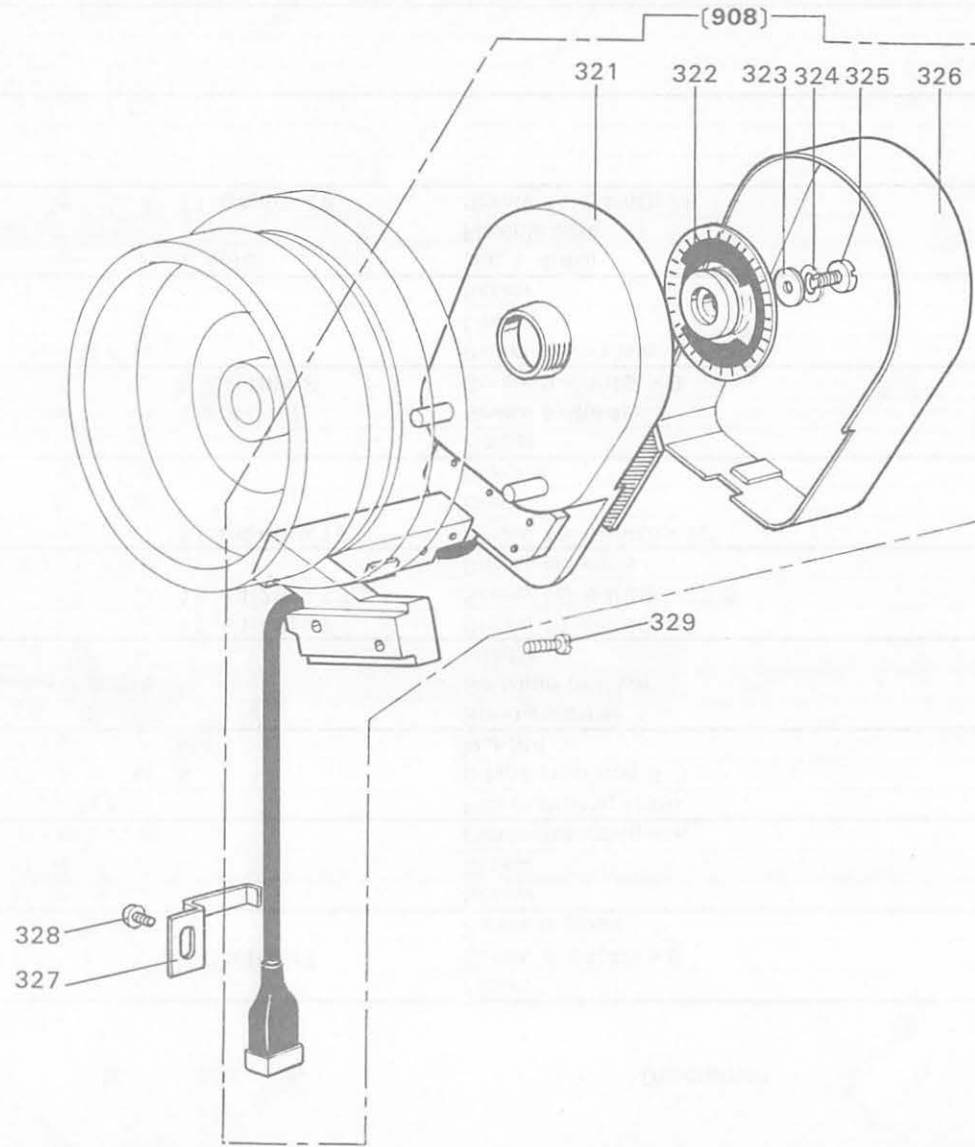
カム軸取付台関係
CAM SHAFT BRACKET

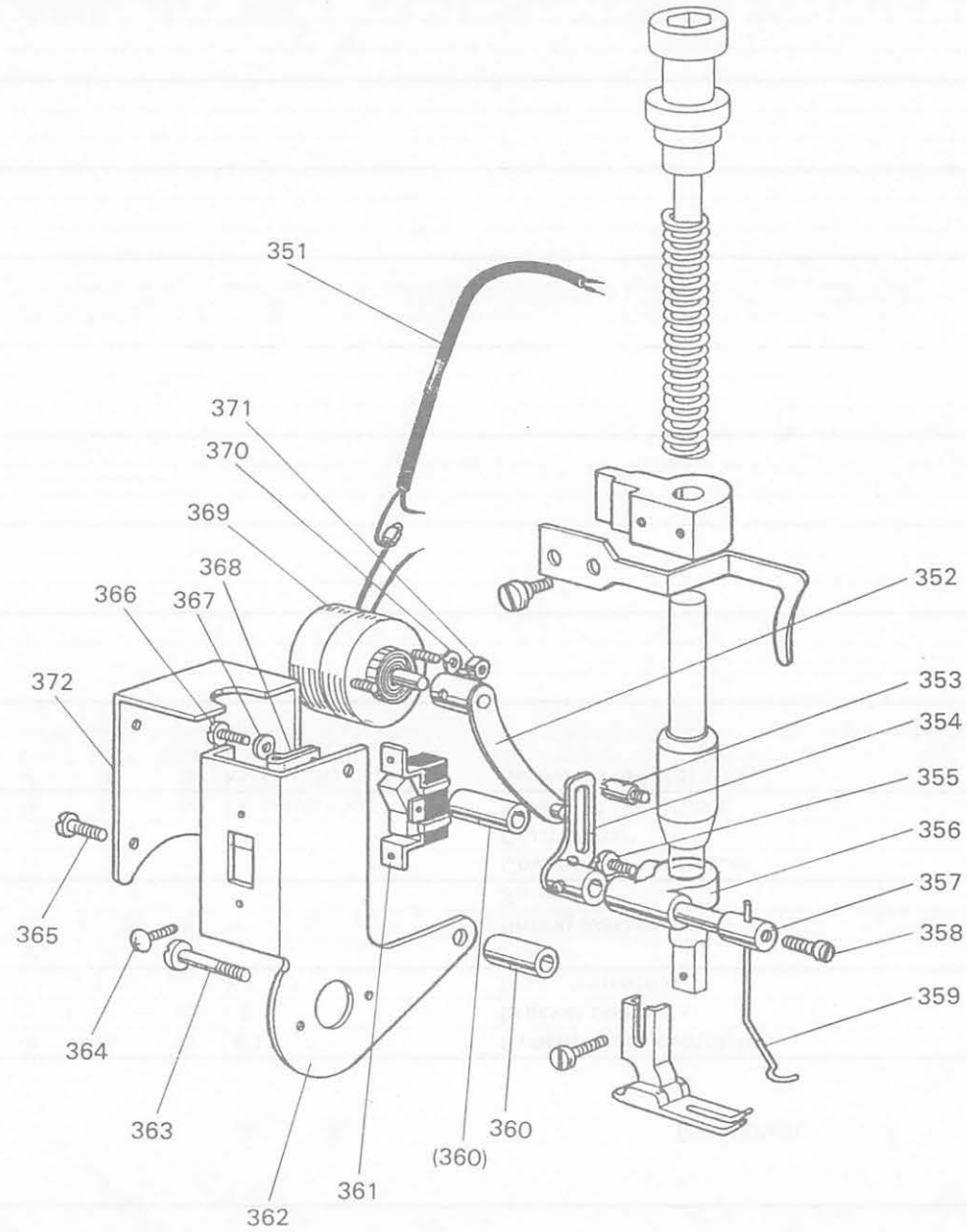
125-180

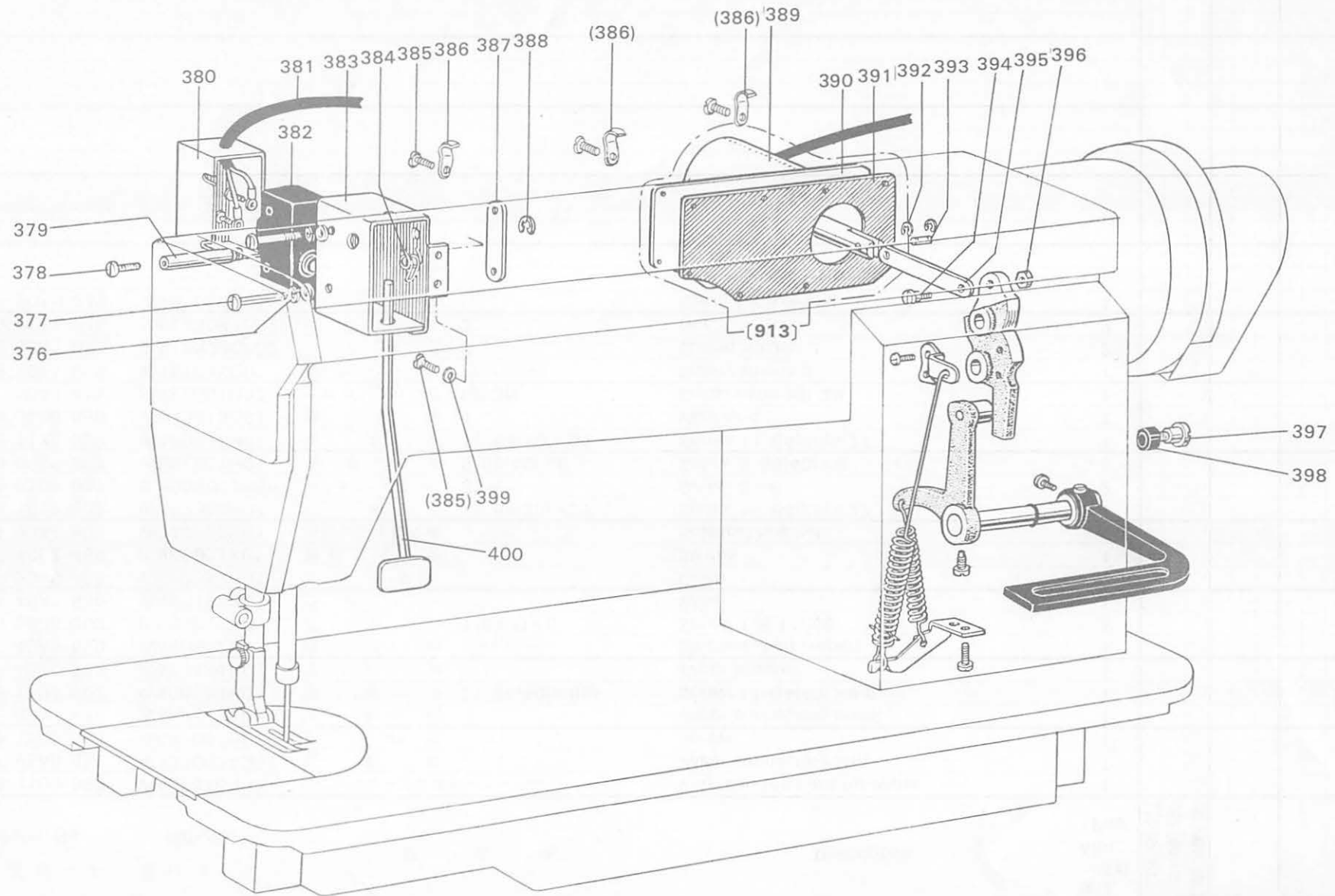


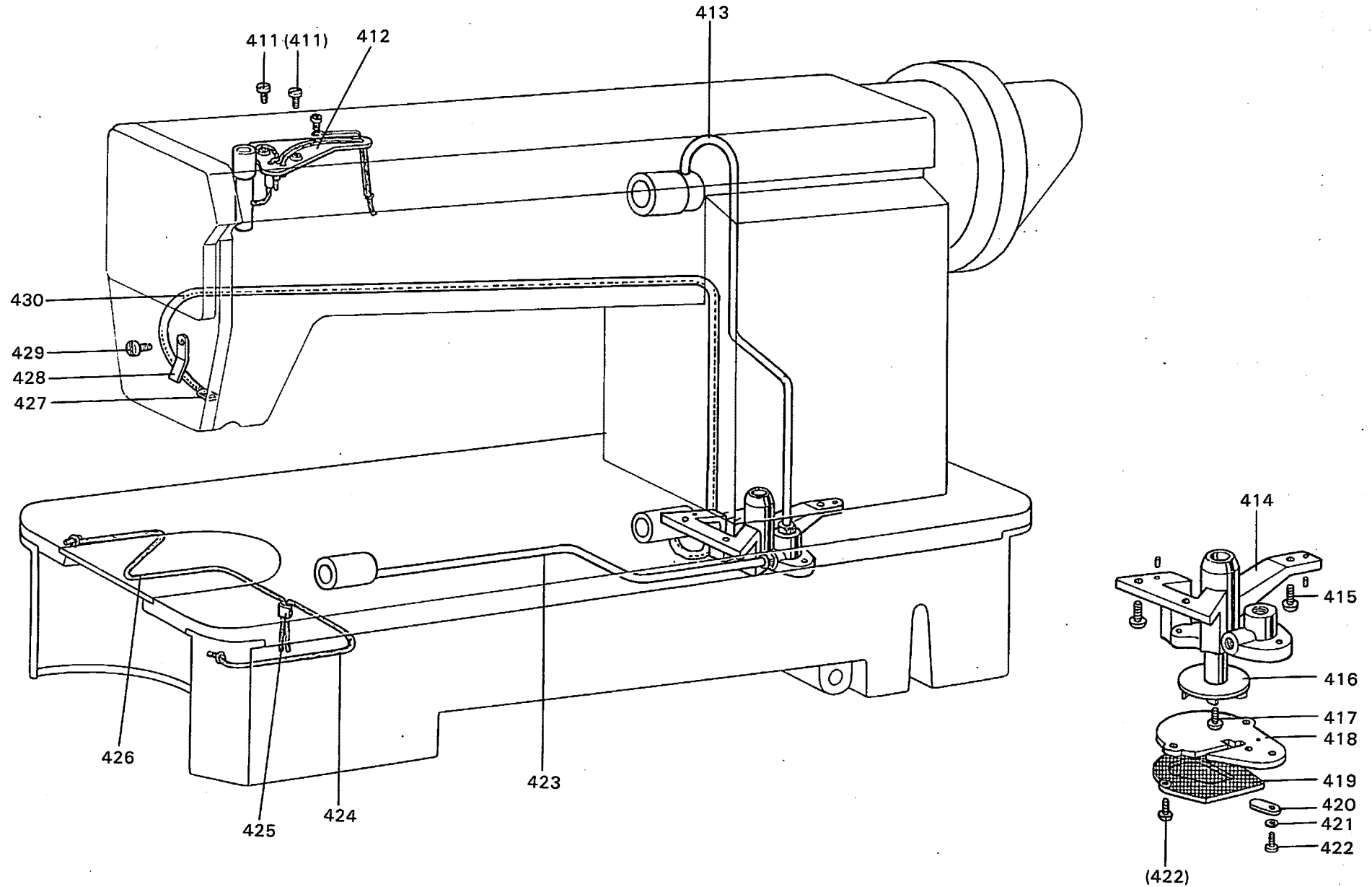
ピッカー及び糸切り作動関係 PICKER AND UNDERBED TRIMMER ACTUATOR









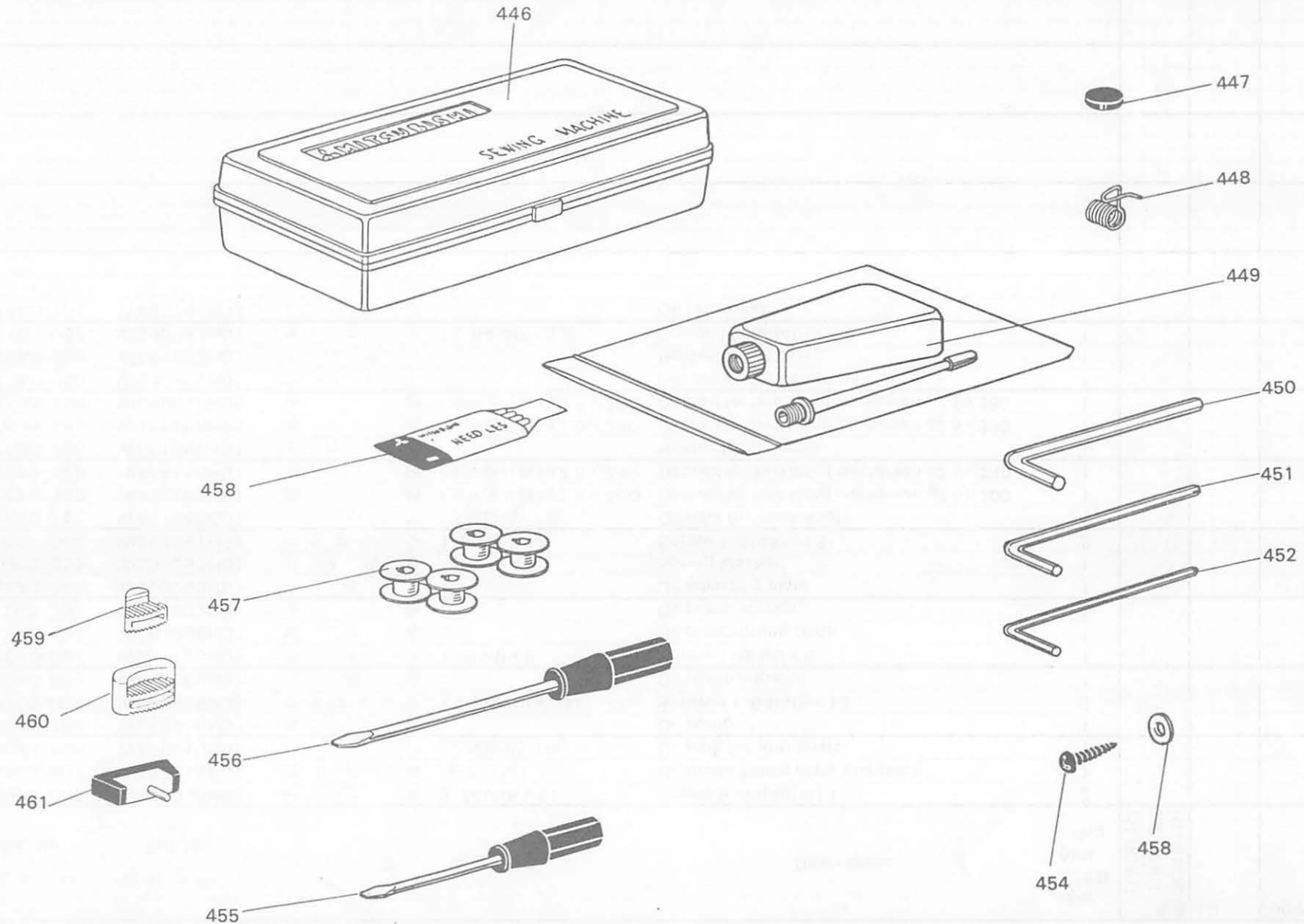


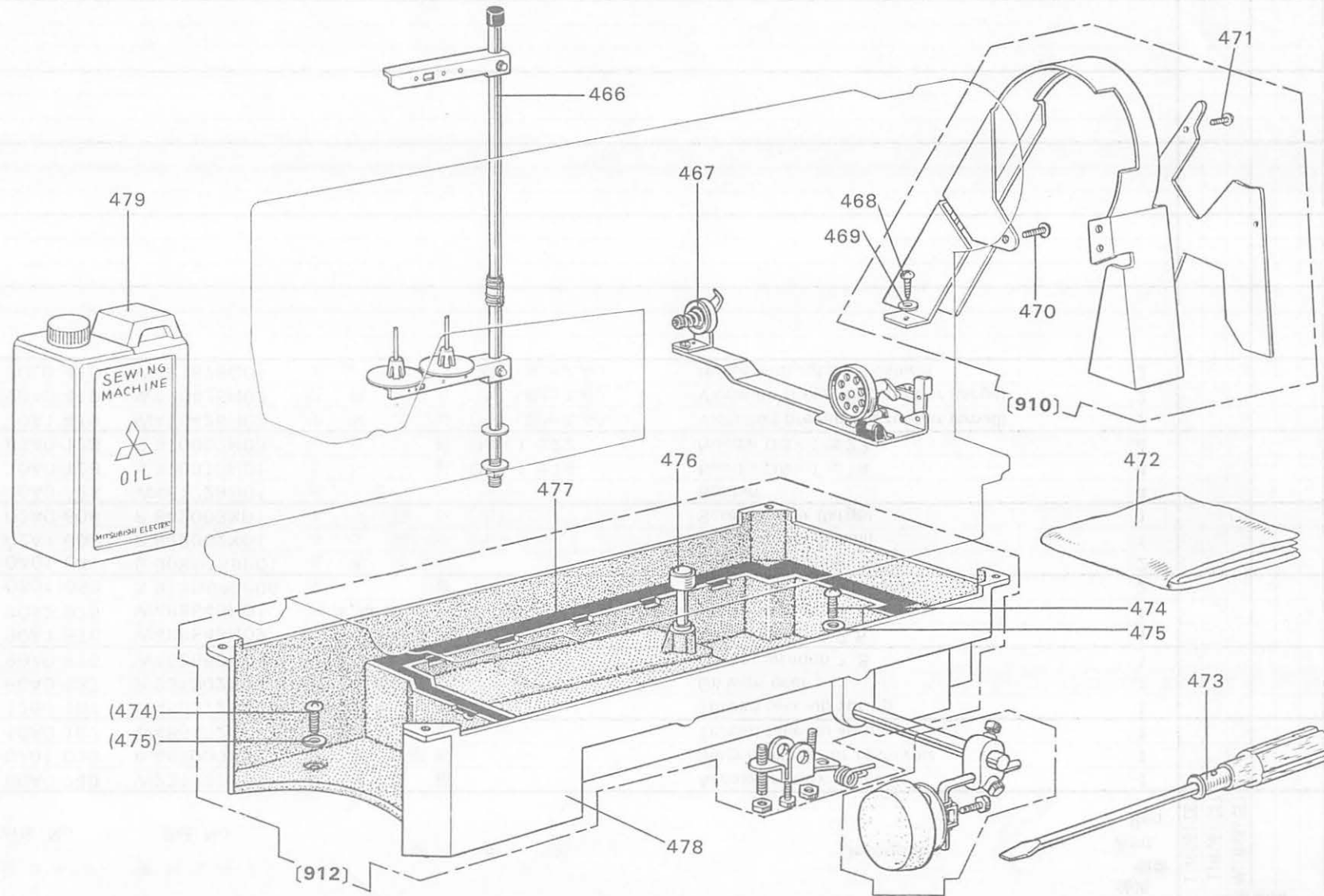
給油関係
LUBRICATION

Fig. No.	部品コード Parts. No.	資材コード Ref. No.	部 品 名	Description	使用 個数 Amt. Req.	共通部品 Common Parts														
						LS2-190-MIT	LS2-190-HIT	LS2-190-MITW												
411	M9 0939 002	W464016H02	平 ネ ジ 9/64(40)×11	Screw 9/64(40)×11	2	○	○	○												
412	MF 80A1 601	W486313G02	取 り 付 け 板 (紐付き組)	Oil brade fitting plate complete	1	○	○	○												
413	MF 80A1 688	W476410G02	パ イ プ (上軸給油) (組)	Oil pipe for arm shaft	1	○	○	○												
414	MF 80A0 783	W346046H01	ポンプケース	Oil pump	1	○	○	○												
415	M9 1103 004	W467868H01	ブラマイネジ 11/64(40)×13	Screw 11/64(40)×13	3	○	○	○												
416	MF 10A0 685	W470288H01	羽 根 車	Oil pump impeller	1	○	○	○												
417	M9 0810 002	W501133H01	平 ネ ジ 1/8(44)×8	Screw 1/8(44)×8	1	○	○	○												
418	MF 10A0 601	W461088H01	取 付 板	Oil pump fitting plate	1	○	○	○												
419	MF 10E0 337	W481402G01	金 網	Oil pump screen	1	○	○	○												
420	MF 10A1 742	W470250H01	蓋	Oil adjusting plate	1	○	○	○												
421	M9 0402 053	W500297H01	バ ネ 座 金	Spring washer	1	○	○	○												
422	M9 0801 004	W467881H01	ブラマイネジ 1/8(44)×13	Screw 1/8(44)×13	3	○	○	○												
423	MF 90E0 142	W461745G03	パ イ プ (下軸給油) (組)	Oil pipe for hook shaft	1	○	○	○												
424	MF 05A0 148	W462988H01	油 紐 (上下送り腕)φ2.5×300	Oil braid for feed lifting mechanism φ2.5×300	1	○		○												
	MF 10E2 148	W444138H01	油 紐 (上下送り腕)φ2.5×240	Oil braid for feed lifting mechanism φ2.5×240	1		○													
425	MF 80A0 780	W501092H01	ホ ル ダ ー	Holder for oil braid	1	○	○	○												
426	MF 05A1 148	W488988H08	油 紐 (水平送り腕)φ2.5×330	Oil braid for feed lifting mechanism φ2.5×330	1	○		○												
	MF 95A0 148	W488988H09	油 紐 (水平送り腕)φ2.5×380	Oil braid for feed lifting mechanism φ2.5×380	1		○													
427	MF 10A0 740	W502394H01	フ ェ ル ト	Felt pouch for return oil filter	1	○	○	○												
428	MF 70A0 689	W484833H01	ホ ル ダ ー	Holder for oil pipe	1	○	○	○												
429	M9 1107 002	W500092H01	平 ネ ジ 11/64(40)×5.5	Screw 11/64(40)×5.5	1	○	○	○												
430	MF 20A0 731	W484209H03	ビニールパイプ	Oil return pipe	1	○	○	○												

LS2-190

ACCESSORY BOX & ITS ACCESSORIES





メモ
MEMO

LS2-190

